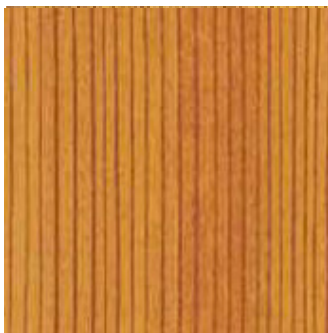


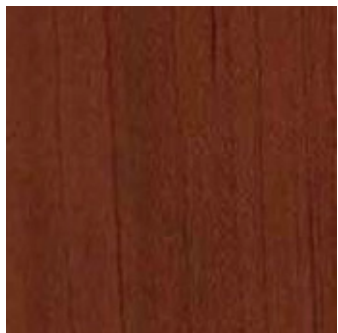
Wood Grain Finish Options

Day-O-Lite's Profile (PRFL-14/22/24/44) Linear Series of products may be ordered with the following wood grain finishes. A two step process consisting of a base color, and a sublimated grain pattern, create hyper realistic finishes that closely mimic the species shown below.

To order simply use the abbreviated codes below as the finish designation within the **FINISH** section of the specification sheet Ordering Guide. Pricing and lead times vary. Samples available upon request. Contact Day-O-Lite for details at sales@dayolite.com.



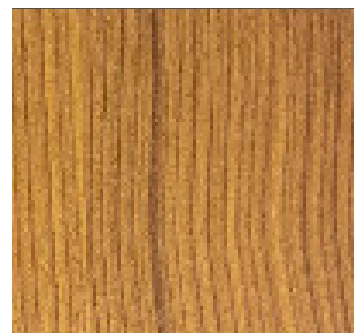
AD = American Douglas



AM = American Maple



MB = Maple Birch



EC = European Cherry



KP = Knotty Pine



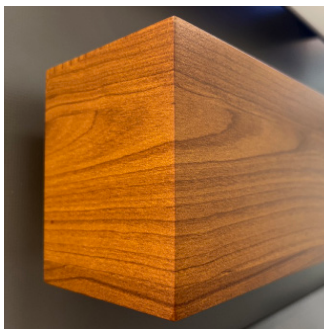
RW = Rosewood



OF = Oak Fine Line

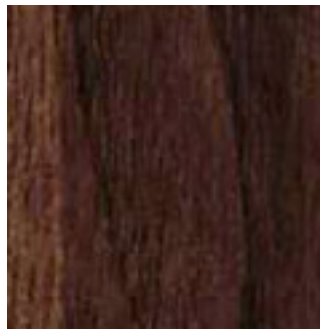


CN = Chestnut



Day-O-Lite's wood grain finishes wrap around the fixture end to look like real book-matched wood veneer.

Not to scale. Images shown are reference only. Grain patterns and coloration may vary from piece to piece.



NW = National Walnut



TK = Teak