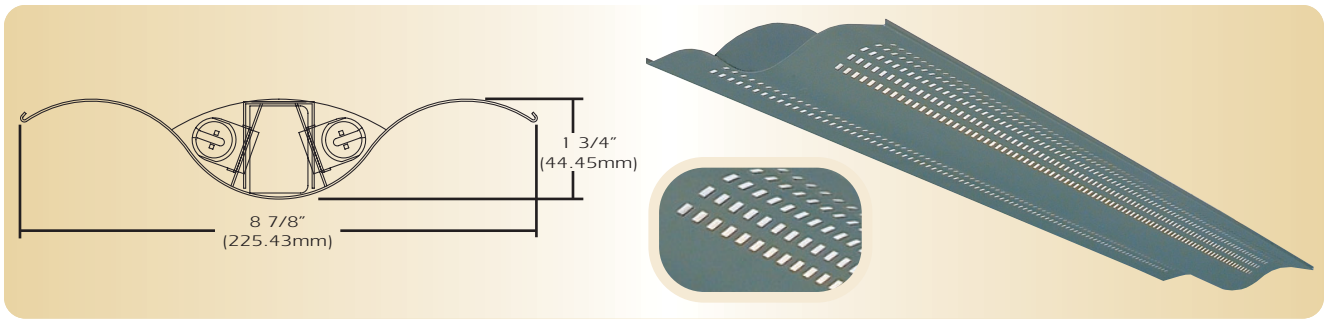


Generation Series 4

G4-DI-9-2T5



TYPE _____

FEATURES

The G4-DI-9 presents a unique ultra shallow winged profile and is one variation of a complete family of suspended linear fluorescent luminaires. The G4-DI-9 is a direct/indirect version of the family of luminaires and provides exceptional performance. Constructed of perforated steel and aluminum extrusions, it features a "reveal" between modules in continuous rows. The computer designed optical system creates a widespread indirect distribution while offering a wide variety of direct perforated accent patterns along its wings creating its own unique styling contrast.

SPECIFICATIONS

Housing: One piece die formed 20 gauge cold rolled steel welded construction forming a 1 3/4" x 8 7/8" wave profile. Continuous straight pattern is 1/4" square with white .020 translucent overlay. The housing ends are die formed extruded aluminum. The decorative intermediate end caps are provided for mounting and joining individual fixtures in rows. Finished ends are laser cut aluminum, with no exposed hardware or knockouts.

Reflector: Die formed 20-gauge cold rolled steel minimum 90% reflectivity in high gloss white enamel with die formed .025 specular anodized aluminum center reflector.

Electrical: Ballast is electronic, high power factor, thermally protected class P, sound rated A, with less than 10% total harmonic distortion. The minimum number of ballasts will be used unless otherwise specified.

Mounting: Standard Installation is an adjustable self-locking aircraft cable assembly 48" x 3/32" in diameter with 5" canopy. One 1/4" SJT straight 54" cord is supplied with each power feed. Standard pendants are available in 24" lengths. See Accessories for additional mounting.

Finish: Fixture housing and steel components are finished in baked white enamel applied over a five stage pretreatment process.

Lamps: Fixtures are provided for use with two 28 watt T5 or two 54 watt T5 HO lamps. (Supplied by Others)

Certification: Luminaires are U. L. listed, C. S. A. certified and are Union Made in the United States of America I.B.E.W.

ORDERING GUIDE

MODEL NO.	DIRECTION	SHIELDING	LAMPS	MOUNTING	LENGTH	FINISH	VOLTAGE	OPTIONS
G4	- DI	- 9	- <input type="checkbox"/>	- <input type="checkbox"/>	- <input type="checkbox"/>	- <input type="checkbox"/>	- <input type="checkbox"/>	- <input type="checkbox"/>
G4	DI = Direct/ Indirect	9 =Square Continuous	228T5 254T5 HO	AC = Cable PD = Pendant	4 = 4 ft 8 = 8 ft	W = White CC = Custom Color	120v 277v	See Options Below

O=Other Specify See Accessories for other, please enter row length (eg. 48=48ft)

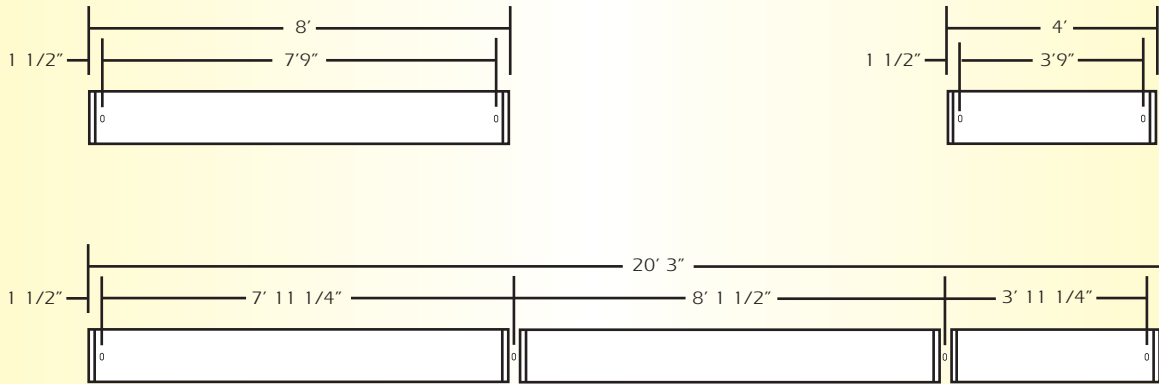
Example: **G4-DI-9-254T5HO-AC-4-W-277V**

Generation Four with square continuous pattern with opal overlay for two 54 watt T5 HO lamps with two 48 inch aircraft cables and power feed four foot fixture finished in bake white enamel with 277v electronic ballast less than 10% total harmonic distortion.

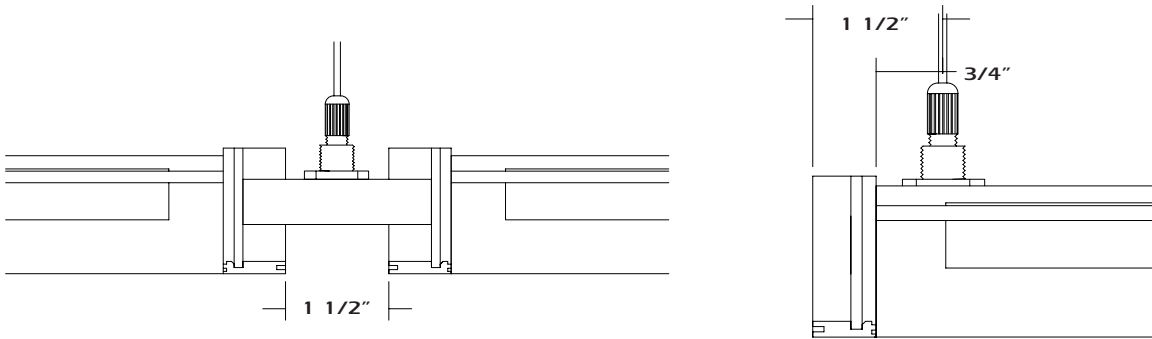
OPTIONS

- DIM**= Dimming Ballast
- EPC**= Emergency Battery Pack
- EMC**= Emergency Circuit
- TCW**= Two Circuit Wiring
- TDW**= Tandem Wiring
- QCW**= Quick Connect Wiring
- OTH**= See Accessories for other options available

LINEAR SECTIONS AND SUSPENSION LOCATION



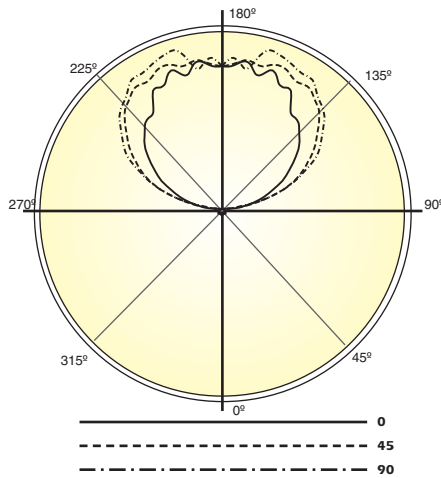
INSTALLATION PREPARATION



TYPICAL JOINT DETAIL

TYPICAL END DETAIL

PHOTOMETRY



LAMP (2) 54W T5 HO
LUMENS: 5000 PER LAMP

Candela Distribution:

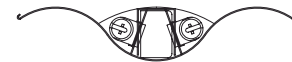
Vert. Angle	0	22.5	45	67.5	90
0	81	81	81	81	81
5	44	43	61	56	76
15	60	60	57	48	71
25	59	58	55	57	51
35	47	52	51	64	66
45	35	42	58	66	75
55	42	43	56	74	62
65	30	36	52	69	75
75	21	27	48	69	74
85	13	31	64	90	92
95	208	192	167	141	136
105	506	633	648	645	657
115	810	965	1078	1138	1130
125	1087	1257	1389	1482	1472
135	1318	1468	1670	1729	1753
145	1443	1667	1815	1901	1914
155	1657	1717	1857	1939	1957
165	1680	1706	1795	1914	1973
175	1754	1859	1774	1848	1838
180	1733	1733	1733	1733	1733

Optical Distribution:
95% Indirect: 5% Direct

Coefficients of Utilization - Zonal Cavity Method:

pfc = 0.20

pcc	.8	.7	.5	.3	.1	0													
pw	.7	.5	.3	.1	.5	.3	.1	.5	.3	.1	0								
RCR	0	70	70	70	70	61	61	61	61	43	43	43	26	26	26	11	11	11	3
1	64	61	58	55	55	52	50	48	37	35	34	22	21	21	8	8	8	2	
2	58	53	49	45	50	46	42	39	32	30	28	19	18	17	7	7	7	2	
3	53	46	41	37	45	40	36	33	28	25	23	17	15	14	5	5	5	1	
4	48	41	35	31	41	35	31	27	25	22	20	15	13	12	5	5	5	1	
5	44	36	30	26	38	31	27	23	22	19	17	13	12	10	4	4	4	1	
6	40	32	27	23	34	28	23	20	20	16	14	12	10	9	3	3	3	1	
7	37	29	23	19	32	25	20	17	17	14	12	11	9	8	3	3	3	1	
8	34	26	20	17	29	22	18	15	16	13	11	10	8	7	2	2	2	1	
9	32	23	18	15	27	20	16	13	14	11	9	9	7	6	2	2	2	1	
10	29	21	16	13	25	18	14	11	13	10	8	8	6	5	2	2	2	0	



Total Luminaire Optical
Efficiency = 73%